



Professional
LED lighting
for
your
nature hobby

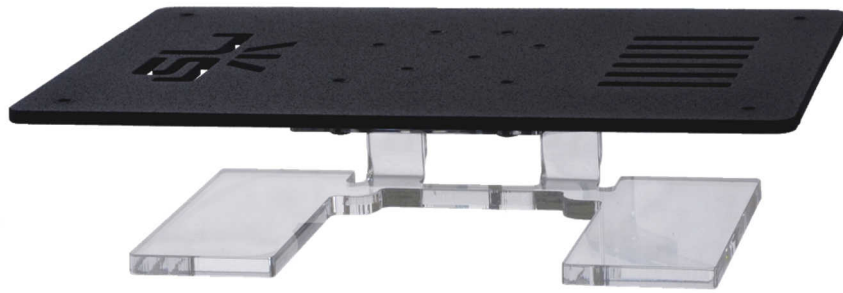
SKYLIGHT BASIC SKYLIGHT BASIC R



Simple and effective.

Perfect solution for your small/medium sized planted vivarium.

Your authorized distributor:



FEATURES



LOW HEAT



TRUE COLORS



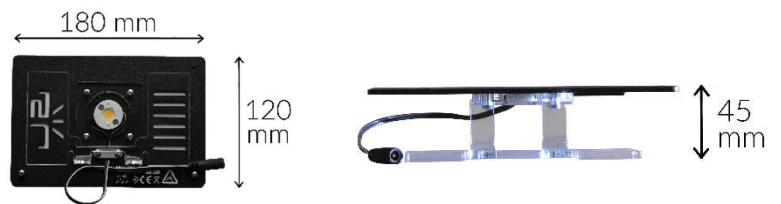
PHOTOSYNTHETICALLY ACTIVE RADIATION

The **SKYLIGHT BASIC** lamp was designed for small and medium sized vivariums planted with living plants (mostly tropical). Single lamp is suitable for terrariums up to 40x40x40 cm. Using a set of 3 **SKYLIGHT BASIC** lamps allows you to properly illuminate a vivarium of about 100 cm wide and about 60 cm high. The spectrum of light emitted by the lamp is suitable for the proper photosynthesis process, making this product suitable for growing even the most demanding plant species. The natural color of the light guarantees true reproduction of the colors of animals and plants that inhabit the vivarium. The lamp is equipped with a base adapted for placing on the glass surface of the ceiling of the vivarium.

PARAMETERS

Power rating:	9 W
Luminous flux:	950 lm
Colour temperature:	Cool white, 5000 K
CRI:	type 95
Voltage rating:	18 V DC
Current rating:	500 mA

Dimensions:

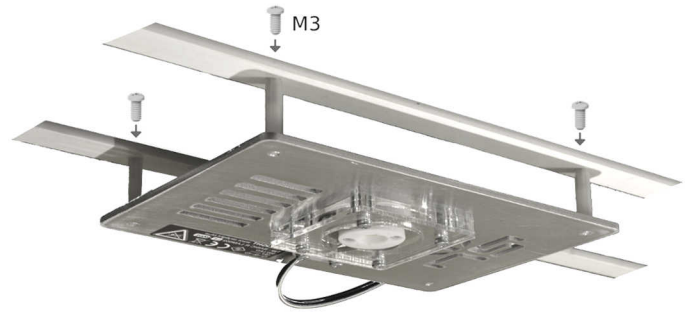


CONFIGURATION

Set			
Recommended terrarium dimensions			
Width [cm]	35	70	100
Height [cm]	45	50	60
Depth [cm]	35	40	40
Accessories included			
Power supply	500 mA	1000 mA	1400 mA
Adapter	-		
Anti-slip pads			

SKYLIGHT BASIC R

JUNGLESKY LINE - LAM002



FEATURES



LOW HEAT



TRUE COLORS



PHOTOSYNTHETICALLY ACTIVE RADIATION

The SKYLIGHT BASIC R lamp was designed for small and medium sized vivariums planted with living plants (mostly tropical). Single lamp is suitable for terrariums up to 40x40x40 cm. Using a set of 3 SKYLIGHT BASIC R lamps allows you to properly illuminate a vivarium of about 100 cm wide and about 60 cm high. The spectrum of light emitted by the lamp is suitable for the proper photosynthesis process, making this product suitable for growing even the most demanding plant species. The natural color of the light guarantees true reproduction of the colors of animals and plants that inhabit the vivarium. The R version is dedicated for applications, in which the lamp is integrated with the vivarium cover or mounted in a rack. SKYLIGHT BASIC R can be placed directly on the glass surface of the terrarium ceiling or hung above the terrarium, if appropriate holders with holes are prepared by the user.







PARAMETERS

Power rating:	9 W
Luminous flux:	950 lm
Colour temperature:	Cool white, 5000 K
CRI:	type 95
Voltage rating:	18 V DC
Current rating:	500 mA

Dimensions:



CONFIGURATION

Set			
Recommended terrarium dimensions			
Width [cm]	35	70	100
Height [cm]	45	50	60
Depth [cm]	35	40	40
Accessories included			
Power supply	500 mA 	1000 mA 	1400 mA 
Adapter	-	